



EUROPEAN  
JOB DAYS

# Living & working in Ireland

🕒 22 February 2024 | 13:40 CET





Rialtas na hÉireann  
Government of Ireland





Rialtas na hÉireann  
Government of Ireland



An  
Phríomh-Oifig  
Staidrimh

Central  
Statistics  
Office

# Population & Migration Estimates April 2022

## 5,100,200

Ireland's estimated  
**Usually Resident  
Population**

## 4,396,500

**Irish** nationals (86.2%)



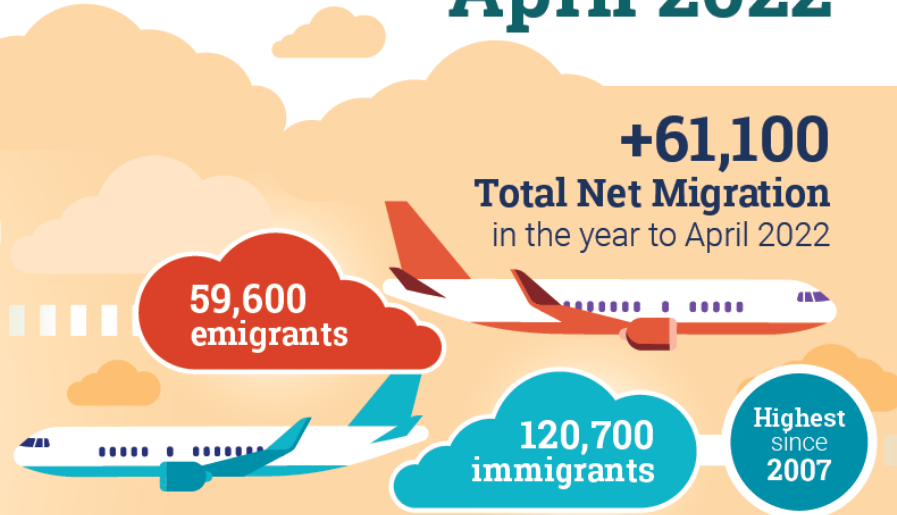
## 703,700

**Non-Irish** nationals (13.8%)



## 768,900

**Persons aged  
65 and over** an  
increase of 139,100  
(22.1%) since 2016



### Migration of **Irish** nationals

**28,900** returned

to live in Ireland

**27,600** left

to live abroad





# Ireland's Demography

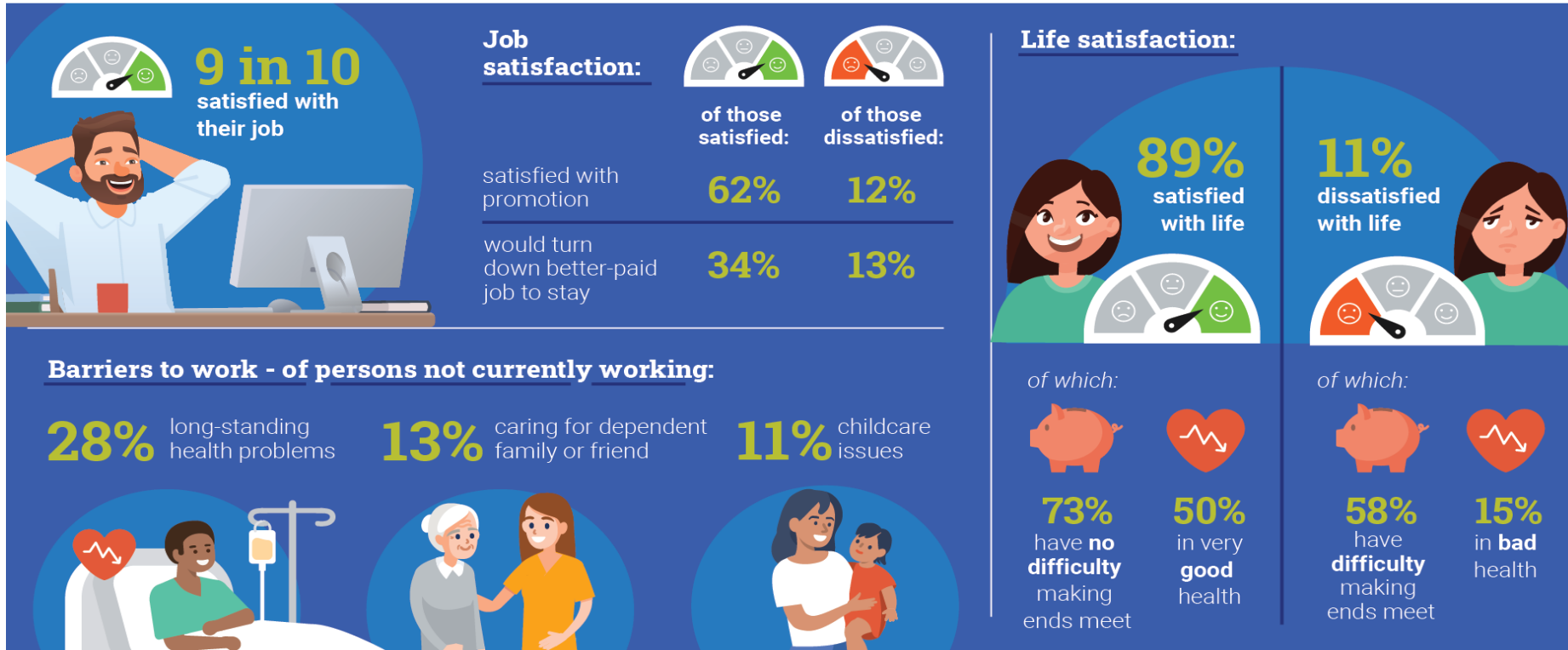
- **Employment rate (15-64 years): 74.2% in Quarter 2 2023**
- **Unemployment rate 4.2 % (January 2024)**



An Phríomh-Oifig Staidrimh

Central Statistics Office

## Personal and Work-Life Balance Survey 2021 Job and Life Satisfaction and Barriers to Work



# Labour Market Factors

- **Young highly educated workforce**
- **The youngest workforce in the EU**
- **Emigration**
- **English language**
- **National wage agreements**
- **Minimum wage: €12.70 per hour**



# Shortages in Hospitality and Tourism Industry

- Hotels
- Restaurants
- Bars
- Activity Centres

## **Roles:**

senior managers, chefs, bar & waiting staff, middle management roles, mid- to senior-level managers in hotels, sales and marketing professionals, and coach drivers



# Employers from Ireland @ Seize the Summer 2024



THE iNUA COLLECTION



# Renting a House or Apartment

Landlords usually require:

- 1 month's rent in advance
- Generally require 1 year's lease

Rental agreements are legal

It's common in Ireland **to share accommodation**, check 'sharing' option on [www.daft.ie](http://www.daft.ie)





# Some approximate Prices from a typical shopping basket

- Eggs dozen €2.70
- Bread €2.00 - €5.00
- Chicken €5.99
- Potatoes (2.5kg) €3.39
- Milk (1 litre) €0.97
- Bottle wine (average) €10.00
- Washing up liquid 500ml €0.79
- Cornflakes breakfast cereal €3.00
- Three course meal (mid range) €25.00 – €50.00



# Information Checklist on moving to Ireland

An EU national will need a [Personal Public Services \(PPS\) number](#) to register for employment services with Intreo/ Social Welfare office or if you are starting employment in Ireland

- **Register for Tax – Tax free allowance Certificate** [www.revenue.ie](http://www.revenue.ie)
- **Open a Bank Account – you will need**
  - Introduction Letter from employer with exact details as per Passport
  - Driving Licence or Passport
  - Details of Irish Address – Utility Bill



# Ireland



- Ireland has the youngest population in the EU (33% under aged 25).
- International share of workforce the 4th highest in the EU (17% in 2019).
- Ireland offers a good quality of life.
- Temperate climate – lots of rain!
- English speaking – the Irish language is still spoken in some areas but for work English is essential.
- Many young people – a variety of interests – football, Gaelic games, golf, fishing, rugby, music, theatre, cinema etc.



**Thank You**  
**Go Raibh Maith Agat**

**EURES Ireland**  
[eures@welfare.ie](mailto:eures@welfare.ie)



Rialtas na hÉireann  
Government of Ireland

