



LIVING AND WORKING IN BERLIN

presented by Berlin Partner

Germany's Largest City



POPULATION
in Berlin (2018)

3.72 m



**FOREIGN
POPULATION**
in 2017

711,300



NEWCOMERS
in 2017

178,100

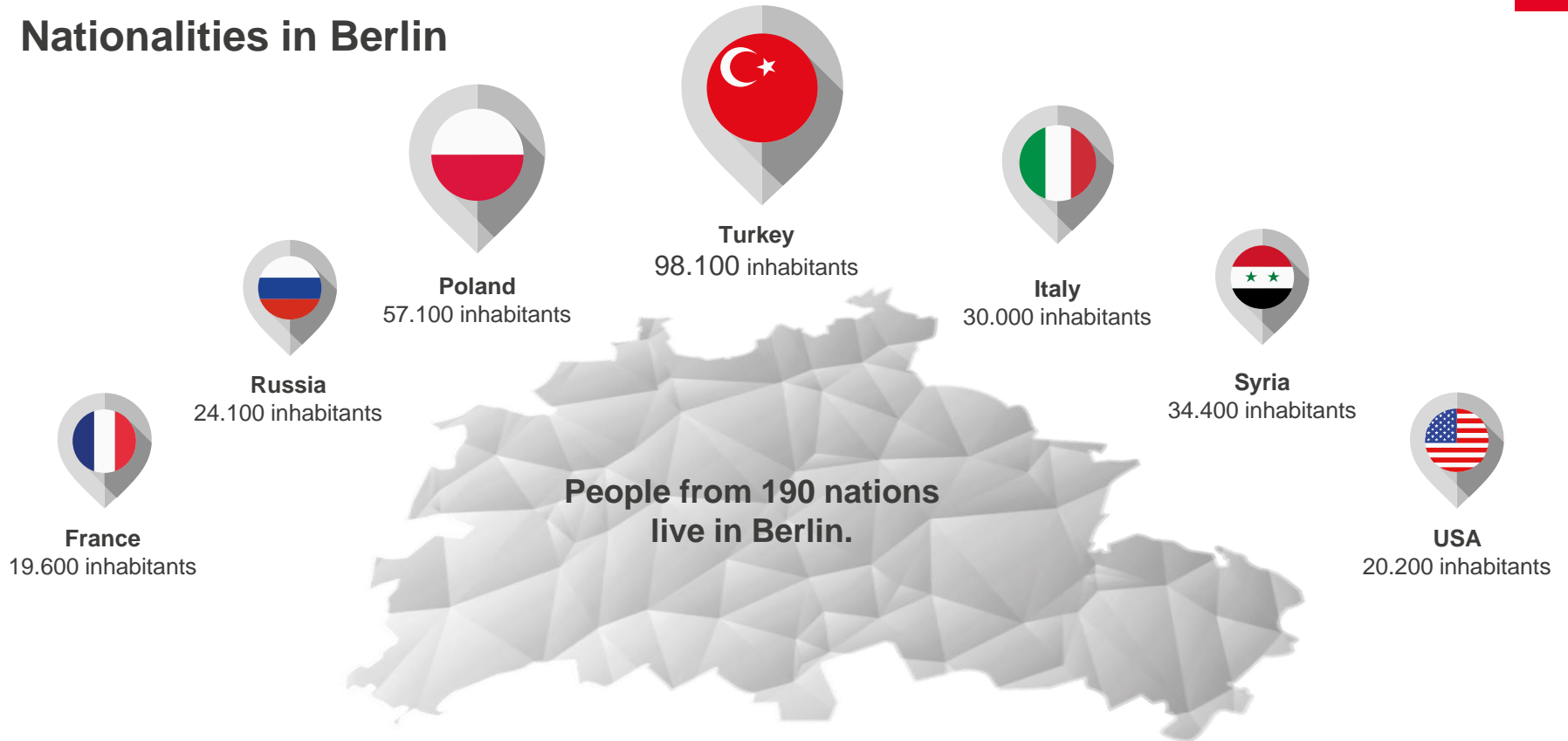
of which 104,400 are foreigners



- **The modern capital city** of the biggest national economy in Europe
- **The second largest city in the European Union**, after London
- **Germany's largest city** by population and area
- **A continuously growing and international economic center**



Nationalities in Berlin



Advantage:
High quality of life



Cultural City



WORLD HERITAGE SITES

3

OPERA HOUSES

3

THEATERS

150

MUSEUMS AND COLLECTIONS

175

GALLERIES

220



- The **leading cultural capital** with 3 UNESCO world heritage sites and 9 palaces
- **Popular musical capital** with star conductors such as Sir Simon Rattle and Daniel Barenboim as well as a hip club scene
- A city known internationally for its **theatres** and **opera houses**
- **The city of movies** with the Berlin International Film Festival, the Berlinale
- **The number 1 location for art** in Germany: renowned museums and galleries

Liveable



 PUBLIC PARKS
2,500

 CYCLING PATHS
600 km

 PROPORTION
of parks, woods, lakes and
waterways
30%

 RESTAURANTS, BARS
AND CLUBS
5,740



- **The number one location in Germany** for sightseeing, restaurants, shopping and going out
- **The green capital** with parks, lakes and woodland
- **High recreational value** for sailors, riders, flyers, golfers and families with children
- **Popular shopping city** with KaDeWe being the biggest department store on the continent
- **The culinary capital** of Germany

Liberal, international, tolerant, family-friendly



NATIONALITIES IN BERLIN

190



DAY-CARE CENTERS

1,977



BILINGUAL EUROPEAN
SCHOOLS

31



SPORT CLUBS

415

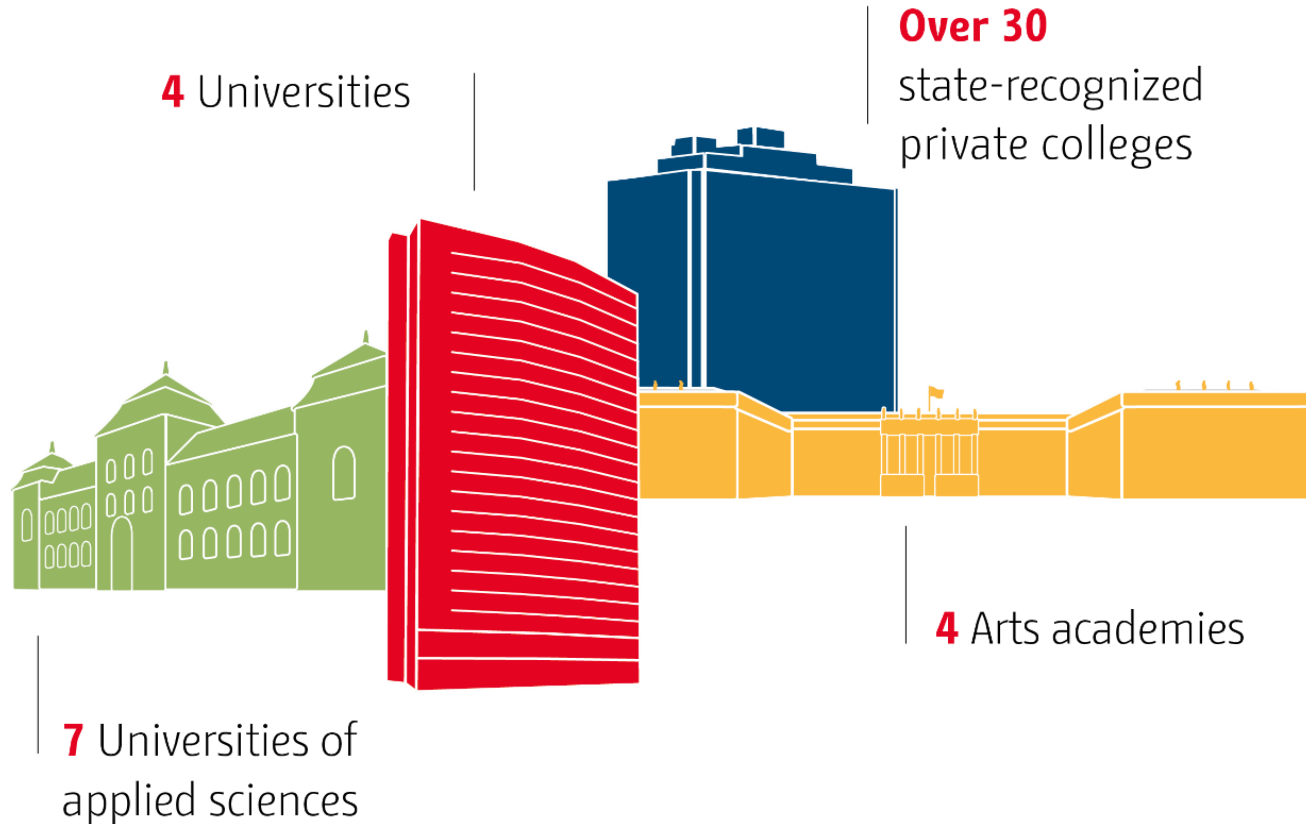


- Berlin is one of the **top 5 most family-friendly cities** in Europe
- **Leading position in childcare** for the optimal connection between family life and work
- **A familiar infrastructure** thanks to day-care centers and international schools
- **Second sporting capital of the world** after Melbourne
- **One third of Berliners** have a migrant background
- Widespread **tolerance, cultural openness, religious freedom** and a **diversity of faiths**
- Large and established **LGBT scene**

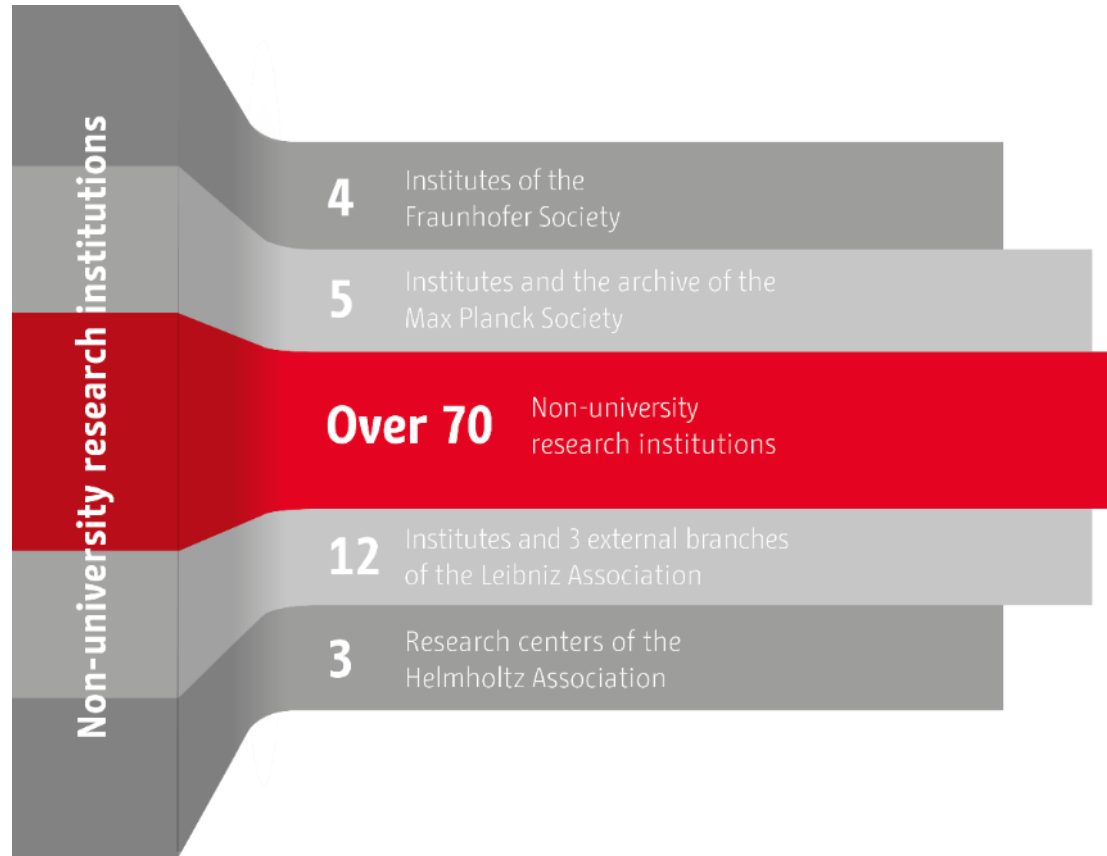
Advantage Brain City



Universities in Berlin



Non-university research institutions in Berlin



Brain City Berlin



Diversity
of expertise



Open research
atmosphere

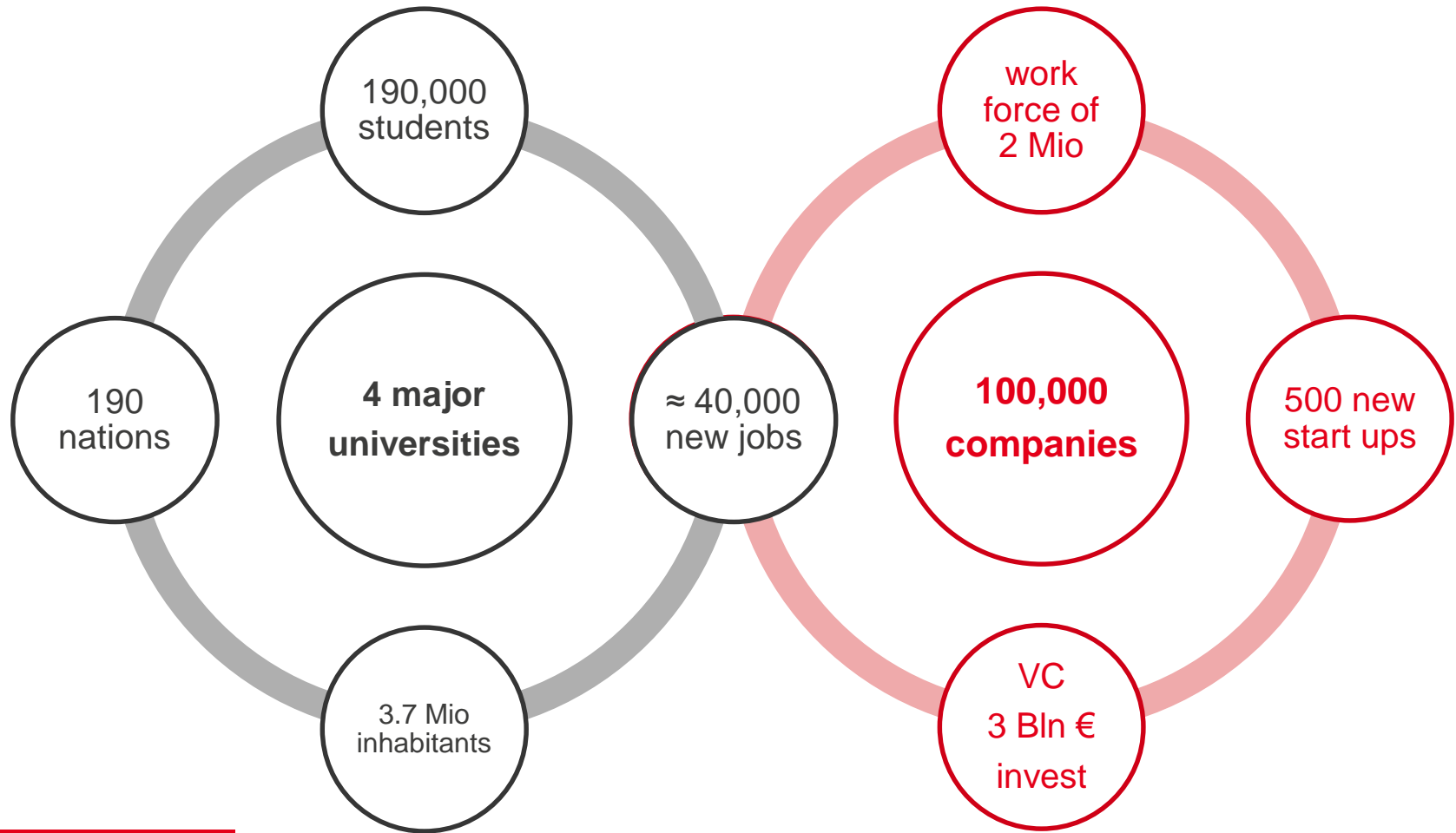


Berlin:
City of opportunities



Advantage Growing Businesses







Location for International Businesses

- International market leaders
- Global drivers of innovation and technology
- IT and Tech corporations
- Traditional German companies
- Successful medium-sized companies
- Fast growing Start-ups e.g. FinTech industry



Find out more about the largest Top-200 companies in Berlin:

www.businesslocationcenter.de/en/welcome-to-berlin/working-in-berlin/berlins-top-200-employers



Berlin „Mittelstand“ – hidden champions





Startup City Berlin



**NEW TECH STARTUPS
PER YEAR**

500



EMPLOYEES

*In Berlin's
technology businesses*

77,000



REVENUE

*Every fifth start-up
generates
a turnover of over*

€1m



**NUMBER OF STARTUPS
IN BERLIN**

2,500

*(approximately 50% of all
German startups)*



Facts and Figures

- Fast growing startup scene and highest **founder ratio** in Germany – every 20 hours a new digital business is founded
- Boomtown for startups focusing on **digital business models**, including **E-Commerce, AdTech FinTech, SaaS** etc.
- **Every 8th new job vacancy** is created in a digital business
- **40,000 jobs** expected to be created in the **FinTech scene** over the next 10 years
- The **best gateway** to the **European Single Market**





The helpful Ecosystem

Incubators & Accelerators

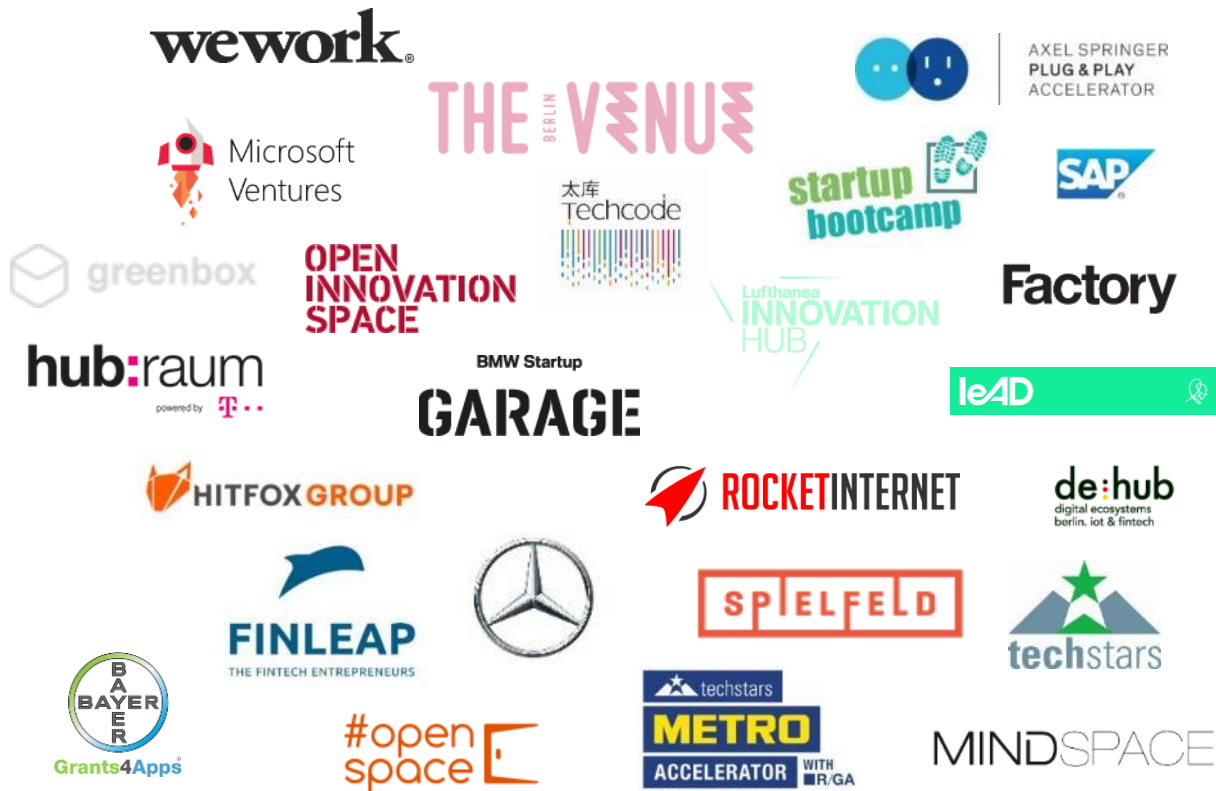
> 60

Co-working Spaces

> 100

New Startups per year

> 500



Future-cluster and industrial sectors in Berlin



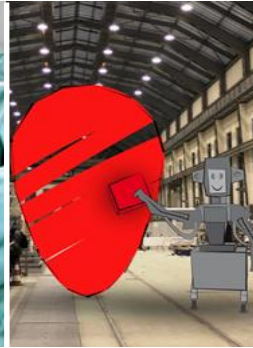
Healthcare industries
and life Sciences



ICT, media and
creative industries



Photonics



Manufacturing
industries



Transport, mobility
and logistics



Energy technology



Service industries

www.businesslocationcenter.de/industry-sector



www.talent-berlin.de/en/working-in-berlin/jobs-in-berlin/



Get more information about

living

www.talent-berlin.de/en/living-in-berlin/

working

www.talent-berlin.de/en/working-in-berlin/

jobs

www.talent-berlin.de/jobs/



Thank you for your interest

Your contact

David Kremers
Project Manager Talent Services

T +49 30 46302-353
david.kremers@berlin-partner.de

Berlin Partner for Business and Technology

Ludwig Erhard Haus
Fasanenstr. 85 | 10623 Berlin
T +49 (0)30 46302-500 | info@berlin-partner.de
www.berlin-partner.de | www.businesslocationcenter.de

