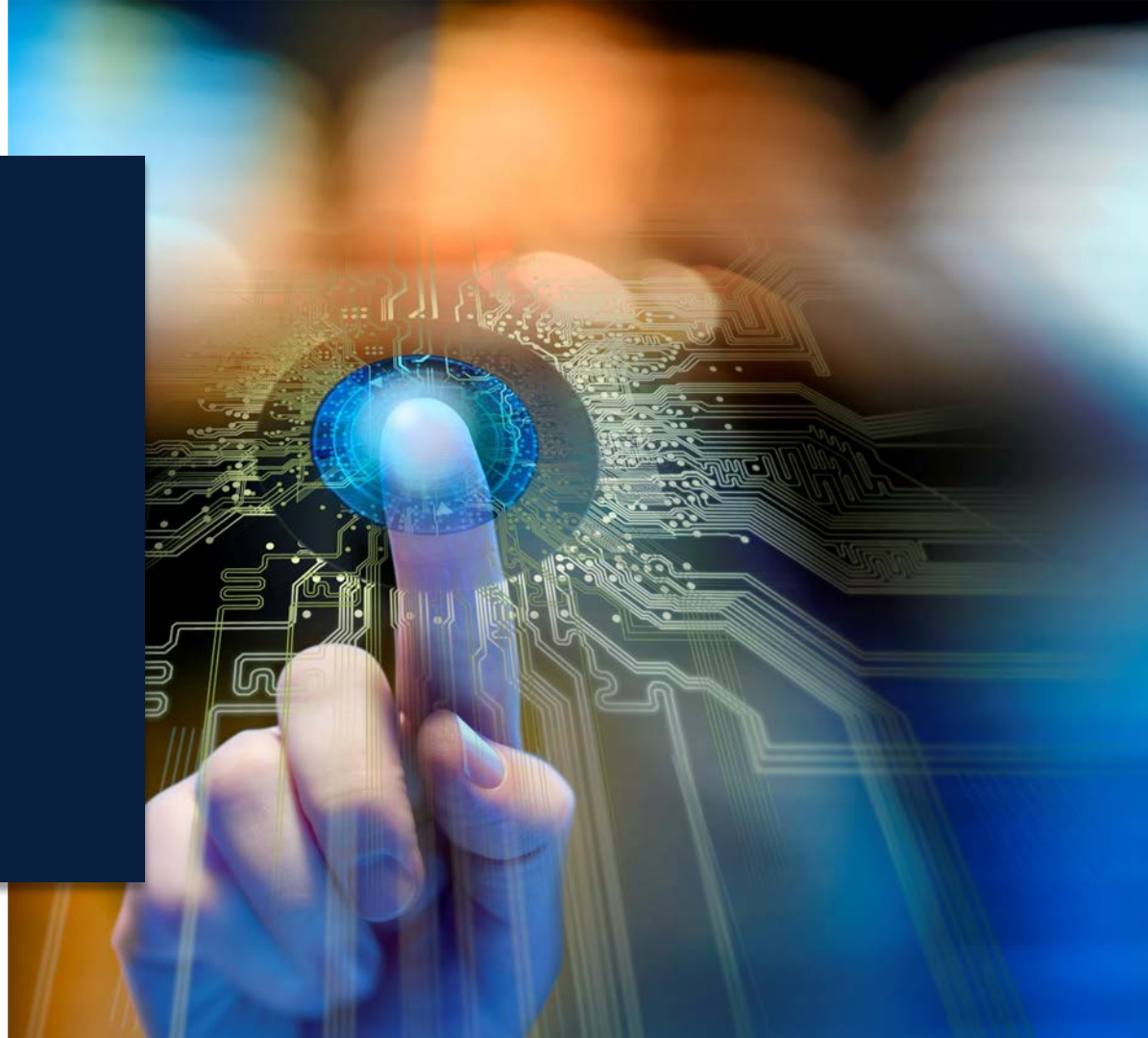


experts for  
experts



N° 1 in connecting professionals



We move professionals and link their ambitions to organisations. Through passion, innovation and a people-oriented approach of our experts we grow together. The perfect match is our daily challenge. With expertise, care and personal commitment we create permanent trust. We continuously aim for satisfaction and perfection.





second largest HR  
service provider in  
the world with a  
turnover of

**19.2**  
million EUR



more than  
**579,400**  
recruitments a day

more than  
**29,000**  
clients

active in  
**40**  
countries



total talent  
architecture

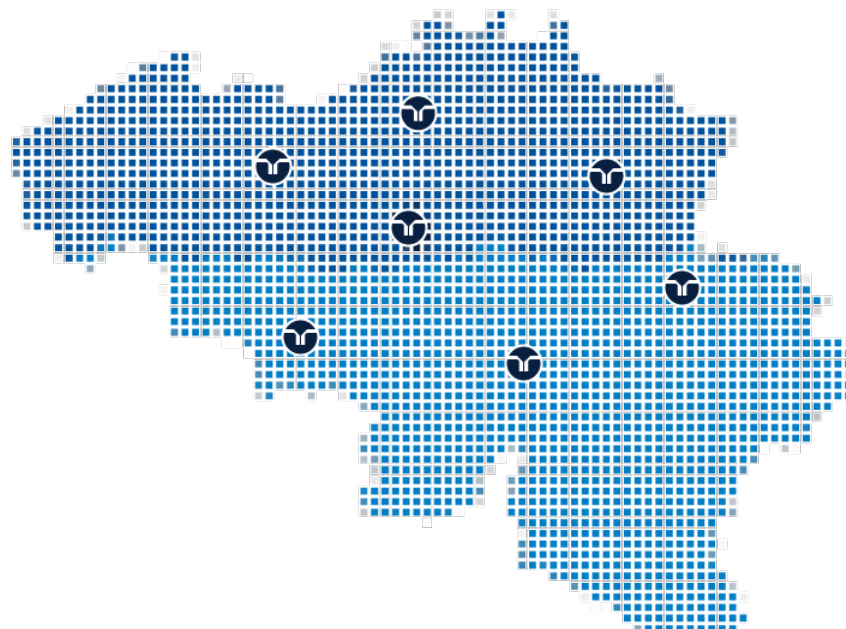




<p>turnover of <b>3.8</b> million EUR</p> 	<p>over <b>40,000</b> professionals working on projects per week</p>	<p>more than <b>60,000</b> permanent placements yearly</p>	<p>active in <b>40</b> countries</p> 	<p>lines of business: engineering, finance, IT, life sciences, sales &amp; marketing, HR</p>	<ul style="list-style-type: none"><li>▪ project sourcing</li><li>▪ temporary management</li><li>▪ recruitment &amp; selection</li></ul>
---	--	--	---	--	---



Antwerp  
Mons  
Brussels  
Ghent  
Liège  
Hasselt  
Namur



turnover of  
**78**  
million EUR



every day  
**950**  
professionals  
working on  
projects  
per week

more than  
**450** permanent  
placements yearly

of which  
**250**  
permanent  
placements in  
engineering via  
  
a Randstad company

lines of business:  
engineering,  
finance, IT, life  
sciences, sales &  
marketing, HR

- project sourcing
- temporary management
- recruitment & selection

engineering / ICT

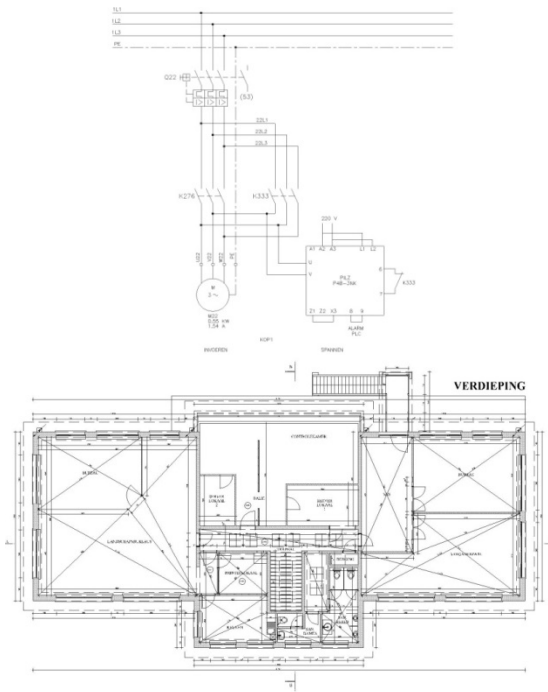


builds solid careers









electricity,  
architecture and  
process  
technology

- drawing circuit diagrams
- drawing P&IDs and isometries
- drawing layouts (buildings, infrastructure, plumbing, etc.)
- zoning according to the A.R.E.I. (Belgian General Regulations for Electrical Installations (drawing up file, drawings, etc.))
- drawing safety plans
- drawing up as-built plans
- managing the plan archive
- digitalising plans
- converting CAD data





creo parametric  
creo elements/direct

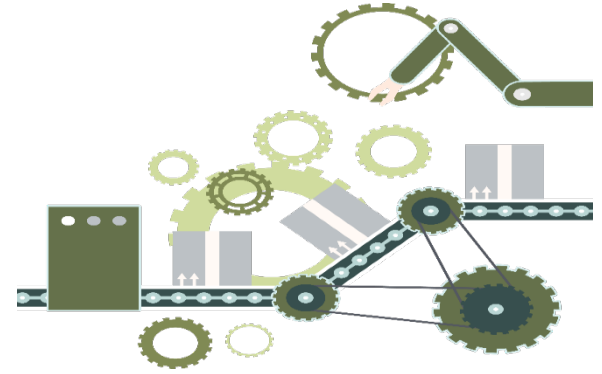
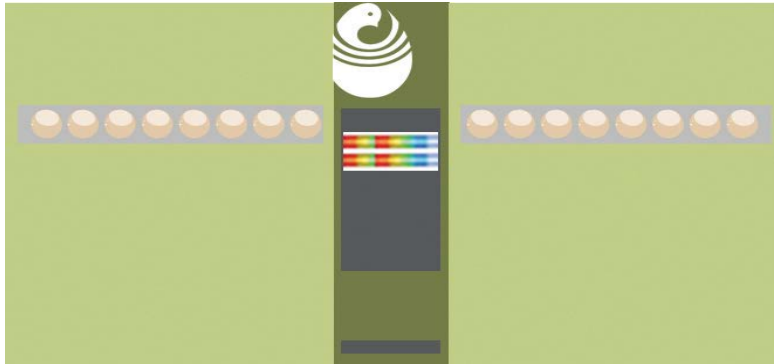




# Who is Petersime ?

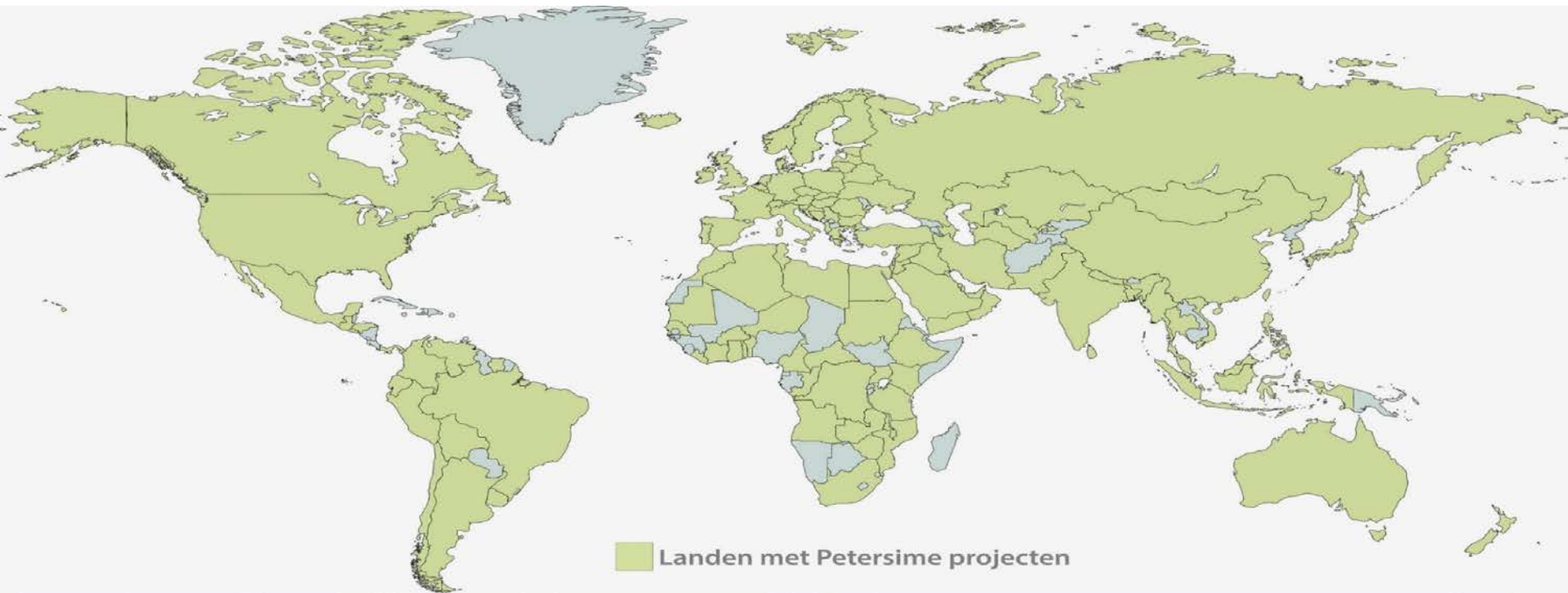
We Manufacture **Incubators**,  
Supply **Hatchery** equipment  
and **Turnkey** Hatcheries.

We offer **expertise and support**

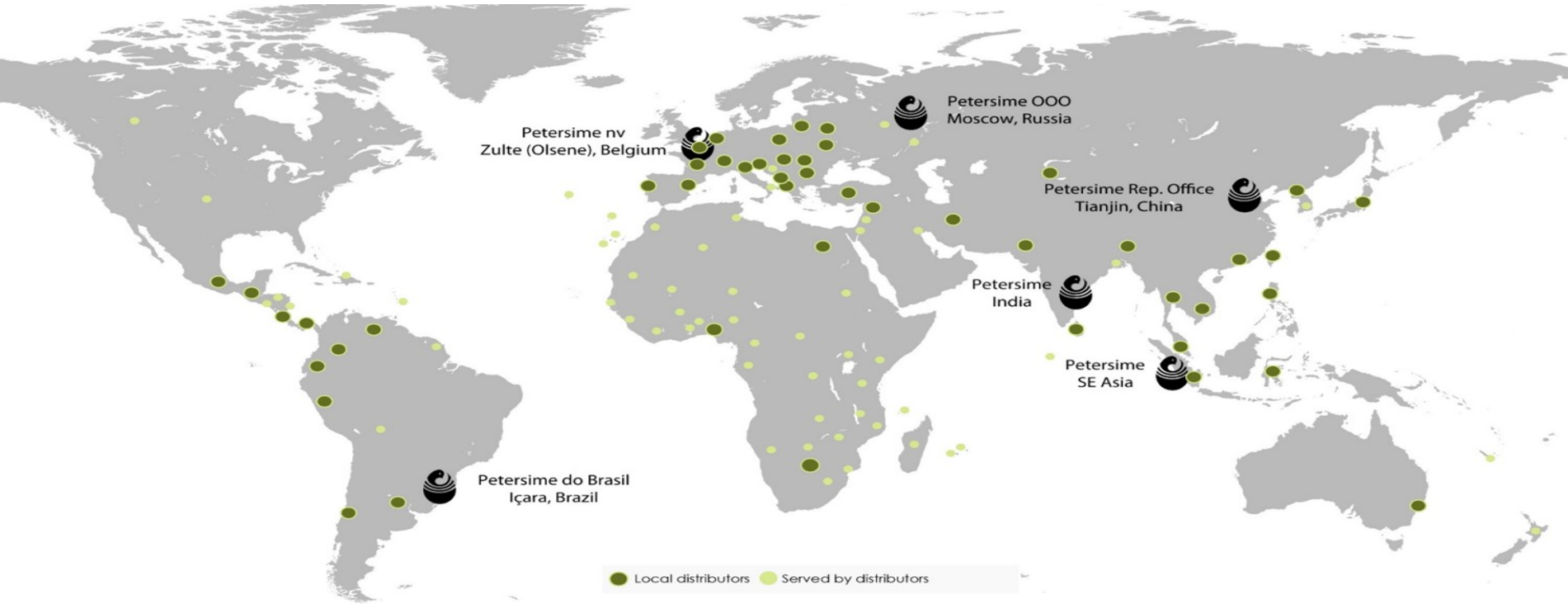


Headquarters in Olsene  
**Belgium** at a site of 40.000  
m2 employing over 250  
people.

Market **Leader** with a **Worldwide** sales and service **network** with customers in more than **150 Countries**.



# Local presence



# Innovation is key



# Expertise & support



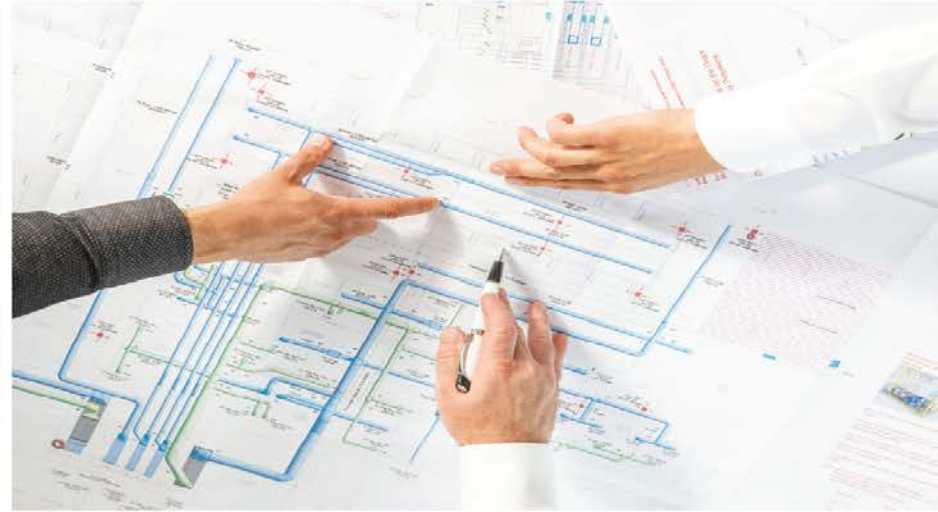


# Expertise & support



# Project Engineering

## Technical Designer Projects



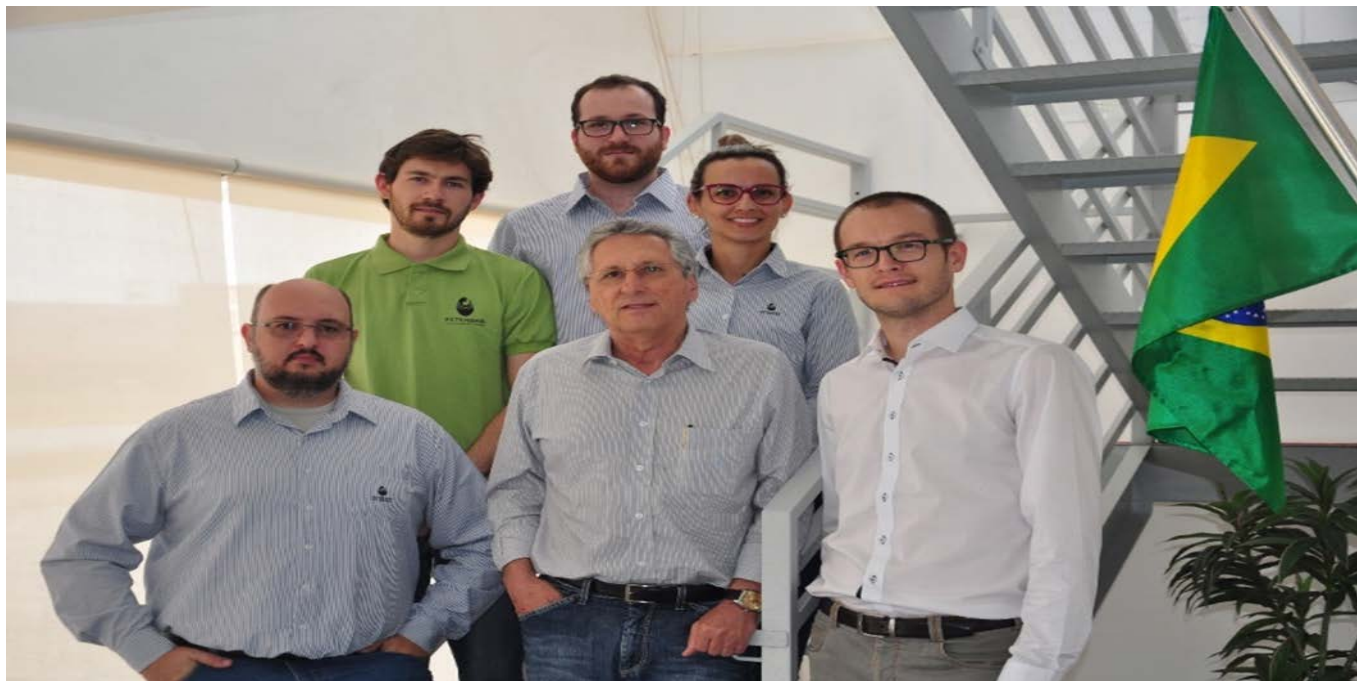
# Customer Service

## Customer Support Engineer



# Petersime Do Brasil

## Director America Latina



# Jobs at Petersime

Commercial Director Latin America

Technical Projects Designer

Customer Support Engineer



# Jobs at Dana



Electrical Systems Engineer  
Mechanical Design Engineer  
Core Systems Engineer  
Modelling & Simulations Engineer  
Electrical Motor Drive Engineer  
Embedded Developer Functional Safety  
Embedded Software Engineer



# Jobs at Tremec



Hydraulic Development Engineer  
Controls Development Engineer  
Controls Calibration Engineer  
Controls Development Process Lead  
Control Test Engineer  
BOM Engineer  
Sensor & Harness Manufacturing Engineer  
Test Engineer



# Jobs at Tractebel



Civil Lead Engineer – Port & Waterways

# Jobs at Televic

televic

Hardware Engineer (R&D)

Embedded Software Engineer

