



TE-palvelut
tjänster | services



Living and Working in Finland
Information for an EU Jobseeker
20. – 21.5.2015
Engineers Mobility Days
Lissabon

EURES FINLAND

Living and Working in Finland



- Introduction
- Labour market situation
- Searching for a job
- Moving to Finland
- Living and working conditions
- Further information



Introduction



- 5,4 million inhabitants
- Parliamentary republic since 1917
- Neighbouring countries: Sweden, Norway, Russia, Estonia
- Two official languages: Finnish (90%) and Swedish (5,4%)
- Religions: Evangelical-Lutherans (77,3%), Orthodoxs (1,1%)
- Member of the EU since 1995
- Foreign citizens 3,6% (mainly in Helsinki metropolitan area)
- Currency: Euro



Biggest cities - number of inhabitants

Helsinki	622 000
Espoo	265 000
Tampere	223 000
Vantaa	210 000
Oulu	196 000
Turku	184 000
Jyväskylä	136 000
Kuopio	108 000
Lahti	104 000

Source: Population Register Center of Finland, 2014



Four seasons - cold winters and warm summers

2014 extremes:

-40.7 °C (Kevojärvi) +32.8. °C (Pori)

Working life in Finland

- 76 % of employees work under a permanent full time contract
- 9 % of employees work under a fixed-term contract
- 11 % of employees have part-time contract

- 70% of workers belong to a trade union

Source: Statistics Finland 02/2013



Finnish labour market 2014

- Employment rate 68 %
men: 68 %, women 67.9 %
- Unemployment rate 8,7 %
- 469 000 new vacancies at TE Office

- Labour shortages and unemployment commonly occur simultaneously in the Finnish labour market








Source: Statistics Finland 2014, Annual Employment Service Statistic 2014

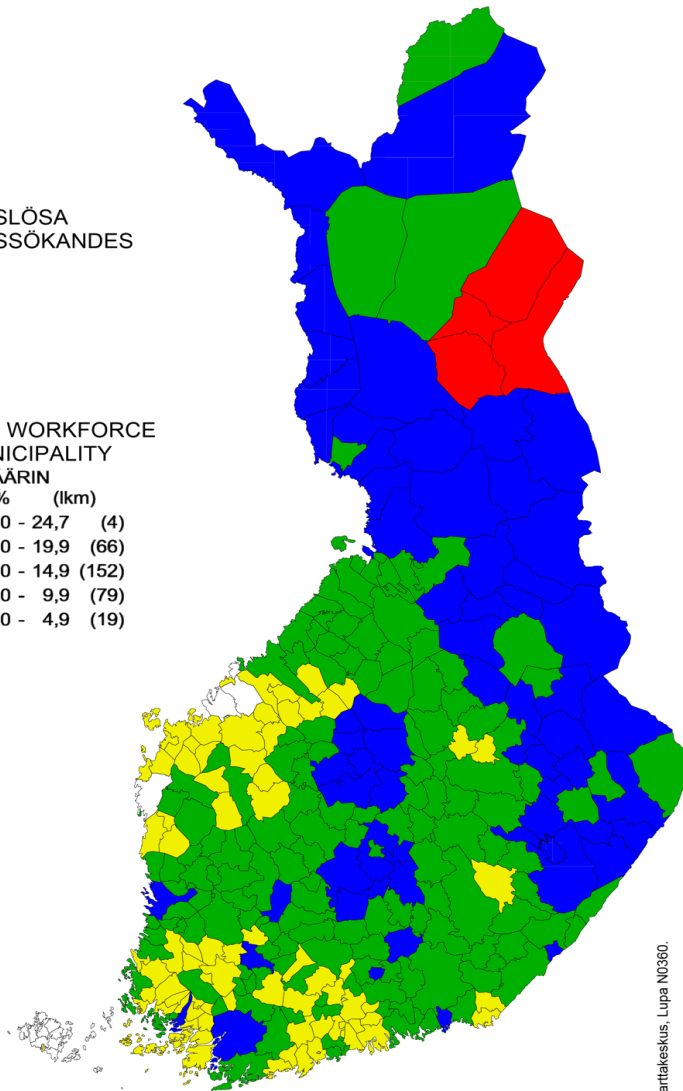
Regional labour market situation 2014



ARBETSLÖSA
ARBETSSÖKANDES

OF THE WORKFORCE
BY MUNICIPALITY
KESKIMÄÄRIN
% (lkm)

	20,0 - 24,7	(4)
	15,0 - 19,9	(66)
	10,0 - 14,9	(152)
	5,0 - 9,9	(79)
	0,0 - 4,9	(19)



© Karttikeskus, Lupa N0360.

Source:

Ministry of Employment and the Economy,
Employment Service Statistics 2014



Labour shortages

Most problematic situation: health care, service, social services and catering sectors

OCCUPATIONAL BAROMETER OF FINLAND 1/2015

Audiologists and Speech Therapists

Commercial Sales Representatives

Contact Centre Sales Persons

Dental Assistants and Therapists

Dentists

General and Specialist Medical Practitioners

Nursing Professionals

Psychologists

Social Work Professionals

Special Needs Teachers



Language skills requirements

- Finnish usually required, in some areas Swedish
- In English may manage for example:
seasonal gardening, berry picking, kitchen work
IT, engineering, international business, research



Searching for a job

- Employment and Economic Development Office - vacancies: www.te-palvelut.fi
- EURES www.eures.europa.eu
- Companies often recruit through their own internet sites.
 - Typical address is: www.companyname.fi
- Private recruitment agencies e.g. www.hpl.fi, www.manpower.fi, www.adecco.fi, www.barona.fi, www.staffpoint.fi

Direct contact with employers!



Standard application procedures

- CV and application letter - possibly also copies of certificate of graduation and and references
- Examples of CVs: <http://europass.europa.eu>
- Employers usually choose 3 to 5 applicants to be interviewed
- Some employers make only the final selection - the rest of the recruitment process may be outsourced

Recognition of qualifications

- Professions that require a recognition decision can be found in health care and teaching, for instance.
- A list of these professions and procedure guide can be found on the website of the Finnish National Board of Education www.oph.fi/info/recognition



Moving to Finland - First steps

- EU registration at the local police www.poliisi.fi
- Population register and home municipality at the magistrate/registration office www.maistraatti.fi
- Social security at the local social insurance office www.kela.fi
- If employed: Tax card at the local tax office www.vero.fi
- If unemployed: Employment and Economic Development Office (TE Office) www.te-palvelut.fi

Terms of Employment

- Collective agreements specifying pay rates for various sectors
- If there is no collective agreement (e.g. domestic helpers), the salary should be at least 1 165 €/month (2015)
- Regular working hours are 8 hours per day and 40 hours per week, with two days' leave per calendar month worked
- **More information:** www.tyosuojelu.fi, www.te-palvelut.fi/finnwork,

Ask for the employment contract in written form!

Examples of gross incomes

- Engineer 4 000 € / month
- Carpenter 2 000 € / month
- Secretary 2 100 – 2 600 € / month
- Bus driver 2 700 € / month
- Cleaner 1 500 – 2 000 € / month
- Shop assistant 1 600 – 2 100 € / month
- Medical nurse 2 800 € / month
- Social worker 3 000 € / month

An average Finnish salary is 3300€ / month (2014/2)

Source: Statistics Finland

Taxation

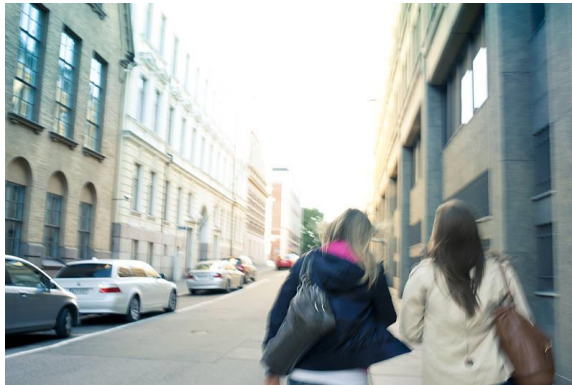


- Progressive income tax
- Example: the share of all taxes and compulsory contributions (incl. social security payments 7,1 %):
 - Salary 2500 €/month → tax 26 %*
 - Salary 3000 €/month → tax 29 %*
 - Local taxes vary from one municipality to the other; members of the Finnish Lutheran/Orthodox church pay a church tax (1 – 2,25 %)
- If stay up to 6 months - tax at source 35%
(Before collecting tax your employer may decuct 17 e/day)
- **More information:** www.vero.fi

Costs of living - Accommodation



- Average rent for a two room flat (50 m²): 500 – 800 €/month
- Average price for a two room flat: 80 000 – 160 000 €
- In Helsinki metropolitan area the prices are twice as much



Accommodation - More information



- Internet portals: www.oikotie.fi,
www.etuovi.com
- Newspapers: www.sanomalehdet.fi
- Housing in Finland: www.housing.fi
- Municipalities in Finland: www.kunnat.net
- Youth hostels: www.hostellit.fi

Costs of living

Food and beverage

- Milk 1 l 0,87 €
- Eggs kg 3,93 €
- Bread kg 3,56 €
- Coffee 500 g 4,11 €
- Beer 1,80 €

Public and private transport

- Petrol 95 E/ 1litre 1,67 €
- Train trip 400 km 60 €
- Bus card, 1 month 46 €

Others

- Kindergarten 24-264 €/month
- Library free of charge
- Cinema ticket 10-14 €



Source: Statistics Finland, National Consumer Research Centre

Further information

- EURES portal
eures.europa.eu
- Ministry of Employment and the Economy
www.tem.fi



- Foreigners working in Finland
www.te-palvelut.fi/finnwork
www.infopankki.fi
- Studying and practical training in Finland
www.studyinfinland.fi
- General information on Finland
www.thisisFINLAND.fi

Thank you!

Kiitos!

EURES FINLAND

Taru Asikainen and Helena Sommarberg

